



CANDIDATE INFORMATION PACK

Version: July 2024

BE PART OF
OUR STORY



THE TANK MUSEUM

TABLE OF CONTENTS

03

Introduction

04

All About Us

05

Our Values

06

What's in it for you?

07

Our Organisation

08

What Next?



MEET THE DIRECTOR



Thank you for your interest in joining The Tank Museum team.

At The Tank Museum we pride ourselves on creating an engaging, educational, and fun experience for our visitors - and our hard working and dedicated team is at the heart of this mission.

As a prospective member of our team, you will have the unique opportunity to work alongside passionate professionals who are committed to excellence in their respective areas.

Any role you may feel motivated to apply for we regard as integral to the success of our museum, and value them all accordingly. We also feel that work should be a place people want to be and do our best to foster a happy environment.

We value diversity, creativity, and a strong work ethic. Our supportive environment encourages continuous learning and professional development, ensuring that each team member can grow and thrive in their career.

As you proceed with your application, please take the time to carefully review the job requirements and do not be shy in highlighting your relevant skills and experiences.

Thank you once again for considering The Tank Museum as the next step in your career journey. We look forward to learning more about you and your potential contributions to our team.

Wishing you the best of luck and every success with your application.

Chris Price,
Director
The Tank Museum



OUR MISSION

WE TELL THE STORY OF THE TANKS AND THE PEOPLE WHO SERVE IN THEM.

WE PRESERVE THE HERITAGE OF THE ROYAL TANK REGIMENT
& THE ROYAL ARMoured CORPS.



ARMED FORCES COVENANT

As a signatory of the Armed Forces Covenant, The Tank Museum recognises the value of serving personnel, reservists, veterans, and military families.

We welcome applications from veterans, Service spouses and partners, and members of the Reserve forces.



ALL ABOUT US

THE TANK MUSEUM BRINGS THE STORY OF TANKS AND THEIR CREWS TO LIFE.

We offer visitors the opportunity to see the world's best collection of tanks, displayed in modern, awe-inspiring exhibitions.

The museum houses some 300 vehicles, representing every major conflict since the First World War. Our moving exhibitions tell the story of this British invention; from the mud of the Somme, to the beaches of Normandy and the deserts of Iraq – featuring powerful stories from the soldiers that fought in them.

Over 200,000 people visit Dorset's largest indoor attraction each year, with the annual TANKFEST event drawing visitors from around the world.

The Tank Museum has a significant online reach, with a large supporter base following on a range of social media platforms across the globe.

As the Museum of the Royal Tank Regiment and Royal Armoured Corps, The Tank Museum is a registered charity.

Alongside vehicles, the collections includes medals, images, documents, personal papers, books, weapons and memorabilia.

The entire collection of this Accredited Museum is "Designated" as being of outstanding national importance – testament to its uniqueness, quality and the expertise of those who care for it.

The museum is situated in Bovington which is regarded as the 'home of the tank', as it was here that some of the first tank crews were trained during the First World War. It remains home to the Royal Armoured Corps today.



FROM THE VERY BEGINNING

The Museum was founded in 1923 as a teaching resource for the Tank Corps. It includes the only surviving example of the very first tank to see action in the First World War.



AN INSPIRING COLLECTION

The Museum's collection extends from the first ever tank to the modern British Challenger 2, and is considered the best and broadest collection of tanks in the world.



THE GIANTS OF HISTORY

Tiger 131 is arguably our most famous exhibit – reminding us of the courage of the British soldiers that fought and captured it in battle.



TANKS ON SCREEN

This tank starred in the 2014 Hollywood Film FURY alongside Brad Pitt. Our exhibitions recognise the impact the tank has had on popular culture as well as on the battlefield.



EVERY OBJECT TELLS A STORY

This ring was given by a 26 year-old lieutenant to his wife. It is mounted with glass from a tank's vision prism which was shattered by an enemy shell, with this fragment embedding in his face.



OUR VALUES

THE VALUES OF THE TANK MUSEUM UNDERPIN THE WORK OF OUR TEAMS.

Whilst there are a great variety of roles, specialisms and professions across the organisation, we all share a common approach in our mission to tell the story of the tank and the people that serve in them.

If selected for interview, you may be asked questions which give you an opportunity to demonstrate how your professional values align with those of The Tank Museum.



WE DISPLAY INTEGRITY.

We are knowledgeable about our subject and professional in the way in which we conduct our business. We act responsibly and embrace responsibility.



WE ARE AMBITIOUS.

Driven by an aspiration to be the best, we strive to be better. We channel our creativity and competitiveness to make us innovative, forward thinking and flexible to challenges.



WE ARE PASSIONATE.

We are authoritative and driven, and we display this daily with our enthusiastic approach to work.



WE CARE.

We work hard because we believe in the cause of the organisation. We are welcoming and friendly to all our visitors. We are inclusive, fair and considerate of each other, showing great respect for our collections and for the stories we tell.



WHAT'S IN IT FOR YOU?

THE TANK MUSEUM IS A DYNAMIC AND GENUINELY EXCITING ORGANISATION THAT OFFERS A RANGE OF LEARNING AND DEVELOPMENT OPPORTUNITIES. OUR TEAM MEMBERS ALSO ENJOY:

PENSION SCHEME.

With options for salary sacrifice (dependant on salary) and increased employer contributions (after qualifying period).

LIFE ASSURANCE.

Team members are covered by our company wide policy, paying out 2x annual salary to your nominated beneficiary in the unlikely event of death in service.

HEALTH CASH PLAN.

From the completion of your probationary period, this covers you, your partner and up to four children. Our scheme allows you to claim for personal expenses against a range of everyday health and wellbeing essentials including dental, optical, physio and more. Also includes a virtual GP and prescription service, available 365 days a year.

ANNUAL PAY REVIEW.

Our salaries are reviewed annually with an inflationary adjustment made to help you manage the cost of living.

30 DAYS ANNUAL LEAVE.

(Including bank holidays) Increasing to a maximum of 35 days with length of service.

BONUS DAYS.

Museum closures or shutdowns (such as Christmas Eve, Christmas Day and Boxing Day) are not deducted from your annual entitlement.

FREE PARKING.

Employees enjoy free onsite parking.

CYCLE TO WORK.

We participate in the Cycle to Work scheme which offers tax benefits on the purchase of bikes and equipment.

FAMILY FRIENDLY LEAVE.

Enhanced maternity and paternity package.

TIME IN LIEU SYSTEM.

Extra hours worked can be banked and claimed back for additional time off.

WELFARE.

The team includes Mental Health First Aiders on hand to look out for you and signpost you to professional support. We offer an employee assistance programme which gives helpline support.

AWARDS & RECOGNITION.

Long service awards, and vouchers to mark life milestones such as marriage and the birth of your child.

FREE TICKETS & DISCOUNTS.

Escort family and friends on a visit to The Tank Museum and they will qualify for free entry. We also offer free tickets for family and friends to use at our special events. Team members benefit from 20% off in our shop and 40% off in our restaurant.

TRAINING & DEVELOPMENT.

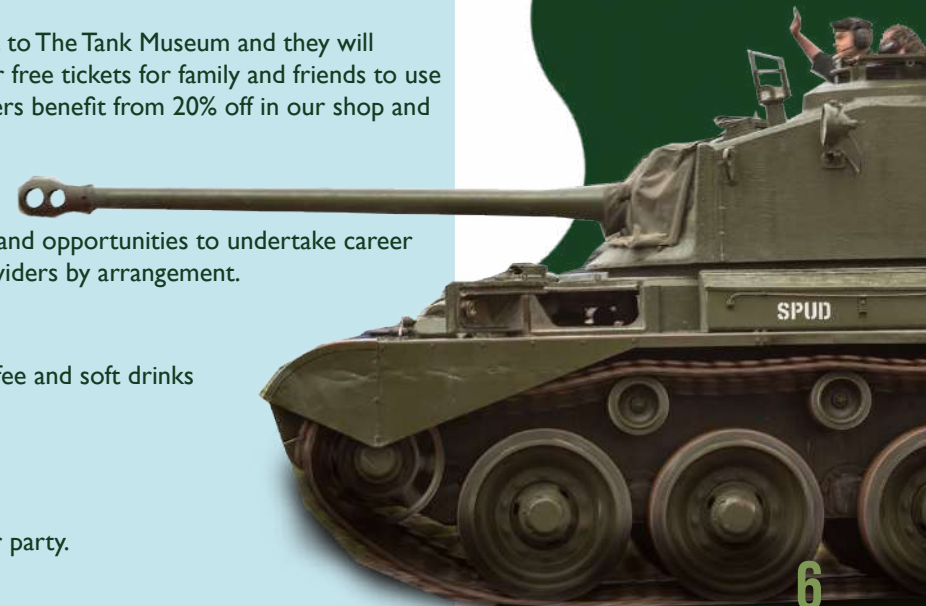
We offer regular training courses and opportunities to undertake career specific training with external providers by arrangement.

FREE REFRESHMENTS.

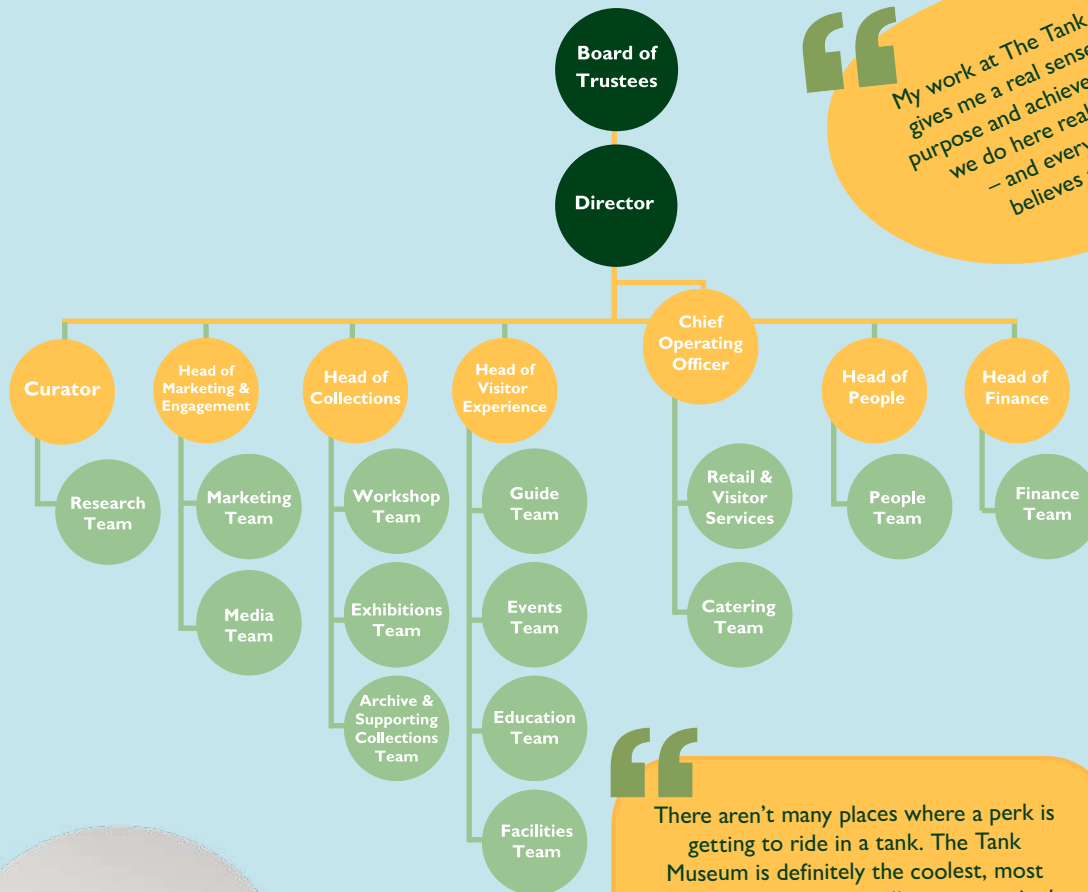
Team members enjoy free tea, coffee and soft drinks in our modern staff facilities.

GETTING TOGETHER.

We arrange free social events – including a Christmas and summer party.



OUR ORGANISATION



“My work at The Tank Museum gives me a real sense of pride, purpose and achievement. What we do here really matters – and everyone else believes that too.”

“I have had so many opportunities at The Tank Museum. I've had some incredible experiences, developed a career, built on my skills and undertaken professional qualifications.”

“There aren't many places where a perk is getting to ride in a tank. The Tank Museum is definitely the coolest, most interesting organisation I've ever worked for - there's always something new to keep me engaged and excited.”

WHAT WE SAY

EQUALITY, DIVERSITY & INCLUSION

At The Tank Museum we are committed to creating a diverse and inclusive workplace where every candidate is given the opportunity to succeed. Our dedication to equality, diversity and inclusion is at the heart of our recruitment practices and we believe these principals are essential to our success and the well-being of our employees.

EQUALITY. We ensure that all recruitment processes are fair, transparent, and free from discrimination. We are committed to providing equal opportunities for all candidates, regardless of race, gender, age, disability, sexual orientation, religion, or any other protected characteristic.

DIVERSITY. We recognise and value the unique backgrounds, perspectives, and experiences that each candidate brings. We believe that a diverse workforce enhances creativity, innovation, and overall performance.

INCLUSION. We strive to create a welcoming and inclusive environment where all candidates feel valued and respected. We are dedicated to ensuring that everyone has an equal opportunity join us and thrive at The Tank Museum.

If you would like more information on accessibility, please visit our website.



WHAT NEXT?

When you're ready, head back to the recruitment portal to complete the online application form.

If you're successful in being shortlisted based on your application, we will arrange a time for you to sit down with us to discuss the role and your suitability for it.

We know interviews can be quite daunting but we're not here to catch you out - we just want to know what makes you brilliant, why you should be part of our growing team and how you can support our values and charitable aims in order to make a difference.

Should you be selected for an interview on site, please arrive promptly at The Tank Museum's main reception. There is plenty of free car parking onsite for visitors.



GETTING HERE

THE TANK MUSEUM
BOVINGTON
DORSET
BH20 6JG
UK



The Tank Museum is in south Dorset near Wareham and is signposted by the brown tourist signs when approaching from Dorchester, Blandford, Weymouth and Poole.

The Tank Museum is about a 30-minute drive from these locations, about 45 minutes from Bournemouth and Salisbury, and about an hour from Southampton and Yeovil.

The main entrance can be found just off Bovington Lane on Linsay Road.

The Tank Museum's nearest station is Wool (1.5 miles), which is on the South Western Railway mainline from London Waterloo to Weymouth.

CONTACT US

E: PEOPLETEAM@TANKMUSEUM.ORG

T: 01929 408951

